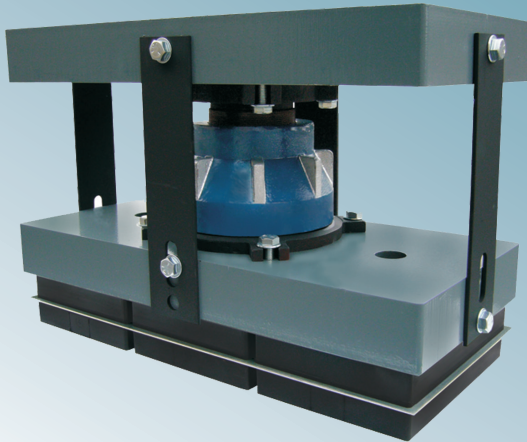
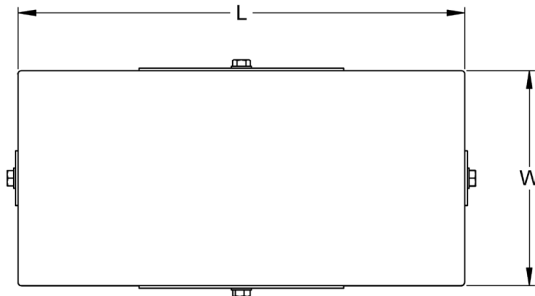


MODEL: 30MXLP & 31MXLP

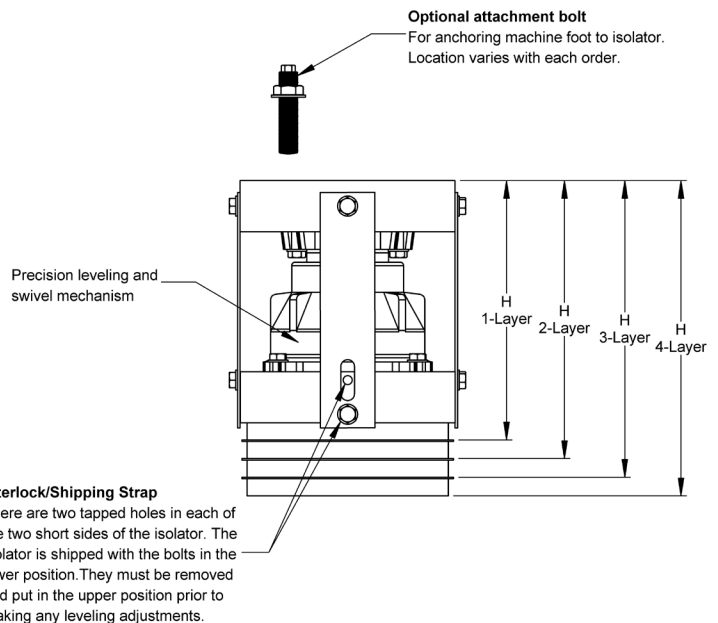
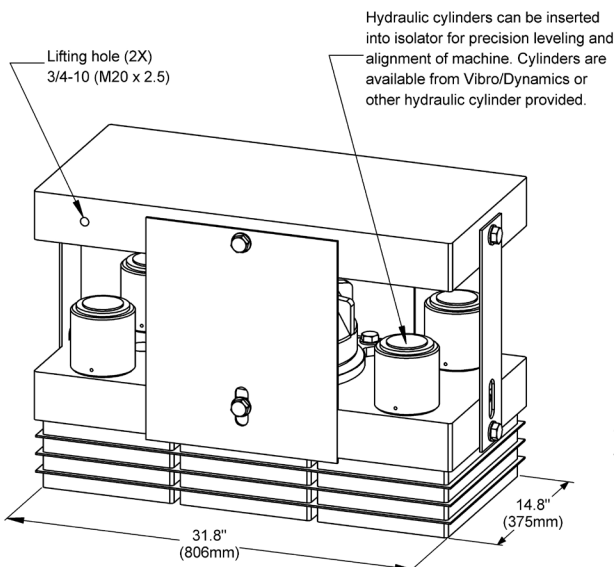


- Excellent isolation for effective control of vibration and shock
- High-performance, multi-layer, modular elastomer construction
- Hydra/Level® Assisted Leveling
 - faster, easier leveling, alignment and elevation adjustment
 - preventative maintenance insurance in the event of foundation settling.
- Integrated precision leveling
 - more precise
 - infinitely adjustable
- Two degree swiveling capability for:
 - uniform support
 - elimination of foundation, grout, or sole plates

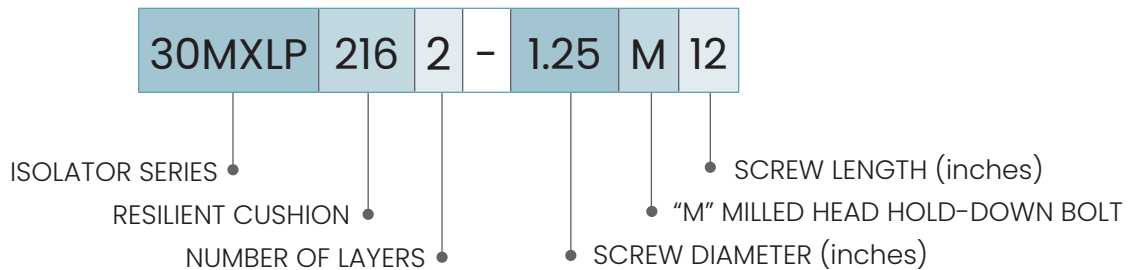


Hydraulic Cylinders used in MX Products are available from third party sources. See Specifications below.

Isolator Model	Cylinder Capacity		Number of Cylinders Required	Cylinder Dimensions				Cylinder Stroke	
				Diameter (max.)		Height (max.)			
	US Tons	MN		inch	mm	inch	mm	inch	mm
30MXLP	93	0.83	2	9.3	237	8.9	227	2.38	60
31MXLP	108	0.96	4	8.8	224	8.3	211	2.38	60



Isolator		L	W	H ±1/8"			Weight (lbs)	
Series	Model			Min	Max	Installed		
30MXLP	1 Layer	30MXLP1201	32.8	15.8	18.6	20.6	19.6	1360
		30MXLP1431	32.8	15.8	18.6	20.6	19.6	1362
		30MXLP1861	32.8	15.8	18.2	20.2	19.2	1380
31MXLP	1 Layer	31MXLP2161	32.8	15.8	18.0	20.0	19.0	1375
		31MXLP2401	32.8	15.8	18.5	20.5	19.5	1349
30MXLP	2 Layer	30MXLP1202	32.8	15.8	20.4	22.4	21.4	1440
		30MXLP1432	32.8	15.8	20.4	22.4	21.4	1442
		30MXLP1862	32.8	15.8	19.8	21.8	20.8	1452
31MXLP	2 Layer	31MXLP2162	32.8	15.8	19.3	21.3	20.3	1443
		31MXLP2402	32.8	15.8	19.8	21.8	20.8	1429
30MXLP	3 Layer	30MXLP1203	32.8	15.8	22.3	24.3	23.3	1518
		30MXLP1433	32.8	15.8	22.3	24.3	23.3	1520
		30MXLP1863	32.8	15.8	21.3	23.3	22.3	1523
31MXLP	3 Layer	31MXLP2163	32.8	15.8	20.6	22.6	21.6	1509
30MXLP	4 Layer	30MXLP1204	32.8	15.8	24.2	26.2	25.2	1578
		30MXLP1434	32.8	15.8	24.2	26.2	25.2	1581
		30MXLP1864	32.8	15.8	22.9	24.9	23.9	1577
31MXLP	4 Layer	31MXLP2164	32.8	15.8	21.9	23.9	22.9	1559



TYPICAL APPLICATIONS

- Presses, Mechanical
- Forging Presses
- Transfer Presses
- Hydraulic Presses
- Isolated Foundations
- Structures

NOTE: Isolator data subject to change without notice.

05/07/2019